

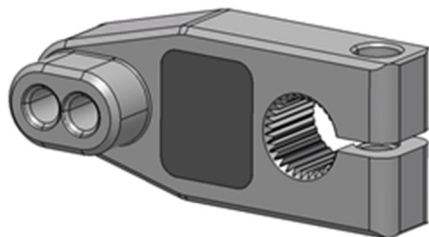
bf1 systems MotoGP Gearshift Loadcell

The bf1systems gear lever uses load cell technology for gear change strategy. We have many designs that are used within several categories including CART, IRL and Sports Cars. bf1systems can adapt a system to suit any installation requirement using our own in house design team. We are also able to include our technology on customer supplied mechanical parts. Strain gauges are bonded to the part and connected to our own in house high precision amplifier circuit. The part is then calibrated and can be used for input into the vehicles logging system to assist with gear strategy development.

The mechanical design of the loadcell is team specific. Please contact us for further information regarding the final design for your gearshift loadcell

The amplifier gain and offset voltage can be either selected from our standard range or alternatively a custom amplifier for a particular installation can be supplied. The gain accuracy of the custom amplifiers can be trimmed to 0.1% (please contact bf1systems for more information on custom options). The amplifier can be supplied with any of the micro connector range, please specify at the time of ordering.

The bf1systems in-line high precision amplifier is a dedicated amplifier, designed and manufactured in house to operate in conjunction with our own full-bridge strain gauge installations. We can also supply the amplifier as a separate part to a customer and again this can be done to whatever gain the customer specifies.



Specification

Electrical

- 7 - 18 Volt supply range
- Supply current <30mA
- High level 0 - 5V output, no requirement for additional strain gauge amplifiers
- Combined non-linearity, hysteresis and repeatability <0.3% FSO
- Thermal zero shift over compensated range 0.1% FSO
- Thermal sensitivity shift over compensated range 0.2% FSO

Environmental

- Compensated temperature range 50°F to 260°F
- Operating temperature range 10°F to 270°F
- Sealed to IP65

